



IDEXX

SNAP[®] Test Quick Reference Guide

Table of contents

SNAP* test kits at a glance.....	3
SNAP Pro* Analyser	4
SNAP* 4Dx* Plus Test	5
SNAP* FIV/FeLV Combo Plus Test.....	6
SNAP* cPL Test	7
SNAP* fPL Test.....	8
SNAP* Parvo Test	9
SNAP* <i>Giardia</i> Test.....	10
SNAP* Feline proBNP Test.....	11
SNAP* Lepto Test.....	12
SNAP* FeLV Antigen Test	13
SNAP* Foal IgG Test.....	14
SNAP* <i>Leishmania</i> Test	15
SNAP* Leish 4Dx* Test	16
Angio Detect*Test	17

Key



Supported species.



Store at room temperature or in refrigerator.



Read time in minutes.



Store in refrigerator.

ALL components MUST be at room temperature before the test is run.

SNAP* test kits at a glance

Test name†	Supported sample types				Storage* Refrigerated = 2°C–8°C Room temperature = 2°C–25°C	Sample size	Drops of solution	Read time (minutes)
	Faecal	Anticoagulated whole blood	Plasma	Serum				
SNAP® 4Dx® Plus Test		•	•	•	Room temperature for 6 months or refrigerated until expiry	3 drops	4	8
SNAP® FIV/FeLV Combo Test		•	•	•	Refrigerated until expiry	3 drops	4	10
SNAP® cPL Test				•		3 drops	4	10
SNAP® fPL Test				•		3 drops	4	10
SNAP® Parvo Test	•					Room temperature until expiry	Coat entire swab tip with a thin layer of faecal material.	5
SNAP® <i>Giardia</i> Test	•				Refrigerated until expiry	Coat entire swab tip with a thin layer of faecal material.	5	8
SNAP® Feline proBNP Test			•	•		3 drops	5	10
SNAP® Lepto Test				•		3 drops	4	10
SNAP® FeLV Antigen Test		•	•	•		3 drops	4	10
SNAP® Foal IgG Test		•	•	•		1 drop	Entire bottle or until well is full	7
SNAP® <i>Leishmania</i> Test		•	•	•		Room temperature for 6 months or refrigerated until expiry	3 drops	4
SNAP® Leish 4Dx® Test		•	•	•	3 drops	4	8	
Angio Detect Test			•	•	Room temperature until expiry	3 drops	3 drops	15

*Refer to package insert for complete storage requirements.

†Before beginning any test, refer to the package insert for complete instructions.

SNAP Pro* Analyser

IMPORTANT: Prepare the SNAP test, but do not activate the test.*

When prompted by the SNAP Pro, gently slide the SNAP test into the port at the bottom of the analyser (well end first) until it clicks into position.



Wrong

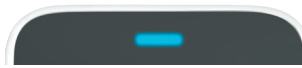


Right



Solid green

All results are negative.



Flashing blue

At least one result is positive.



Flashing yellow

Visual confirmation needed.
(See operator's guide for more information.)

Interpreting SNAP Pro icons

Icon	Description
	Wireless (Wi-Fi) signal status (5 gray bars = best signal; 5 red bars = no signal)
	Lost Wi-Fi communication
	Connected and communicating with the IDEXX VetLab [®] Station via a wired connection (red icon indicates the analyser is off-line)
	Lost Ethernet connection
	Battery charging

Icon	Description
	Software upgrade is available (SmartService [®] Solutions customers only)
	Warning notification (grey icon indicates the warning has been viewed and is unresolved)
	Error notification (grey icon indicates the error has been viewed and is unresolved)
	Lost communication with IDEXX VetLab Station

For more information or to order this product, visit idexx.co.uk/prohelp.

*Before beginning any test, refer to the package insert for complete instructions.

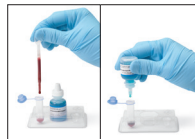
SNAP* 4Dx* Plus Test

Screen dogs for six vector-borne disease causing pathogens.



Can be stored at room temperature for 6 mos.*

Test procedure†



1. Using the provided pipette, dispense **3 drops of sample** and **4 drops of conjugate** to the sample tube.



2. Gently **invert 3–5 times** to mix.



3. Pour the entire contents of the sample tube into the sample well of a SNAP 4Dx Plus device.



4. Use the SNAP Pro* Analyser to automatically activate the SNAP test and interpret the result.
OR
When colour **first** appears in the activation circle, press firmly to activate. You will hear a distinct “snap.”



5. Read the result at **8 minutes**.

Whole blood‡, serum,
or plasma sample

Positive control

E. canis/*E. ewingii* Ab

B. burgdorferi Ab

A. phagocytophilum/
A. platys Ab

D. immitis Ag

For more information or to order this test, visit idexx.co.uk/snap4dxplus.

*Tests expire after 6 mos at room temperature. If not stored at room temperature, tests can be refrigerated until expiration date. Refer to package insert for complete storage requirements.

†Before beginning any test, refer to the package insert for complete instructions.

‡Anticoagulated whole blood (e.g., EDTA, heparin).

SNAP[®] FIV/FeLV Combo Plus Test

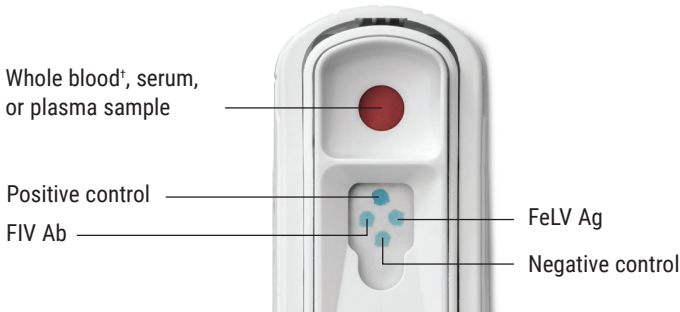
Test all new-to-household, at-risk, and symptomatic cats for feline immunodeficiency virus (FIV) and feline leukaemia virus (FeLV).



Test procedure*



1. Using the provided pipette, dispense **3 drops of sample** and **4 drops of conjugate** to the sample tube.
2. Gently **invert 3–5 times** to mix.
3. Pour the entire contents of the sample tube into the sample well of a SNAP FIV/FeLV Combo device.
4. Use the SNAP Pro[®] Analyser to automatically activate the SNAP test and interpret the result.
OR
When colour **first** appears in the activation circle, press firmly to activate. You will hear a distinct “snap.”
5. Read the result at **10 minutes**.



For more information or to order this test, visit [idexx.co.uk/snapcombo](https://www.idexx.co.uk/snapcombo).

*Before beginning any test, refer to the package insert for complete instructions.

[†]Anticoagulated whole blood (e.g., EDTA, heparin)

SNAP[®] cPL Test

Test dogs that present with vomiting, anorexia, and/or abdominal pain.



Test procedure*



1. Using the provided pipette, dispense **3 drops of sample** and **4 drops of conjugate** to the sample tube.



2. Gently **invert 3–5 times** to mix.



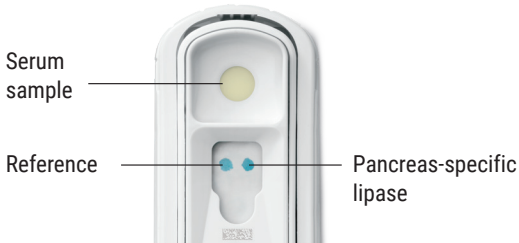
3. Pour the entire contents of the sample tube into the sample well of a SNAP cPL device.



4. Use the SNAP Pro[®] Analyser to automatically activate the SNAP test and interpret the result.
OR
When colour **first** appears in the activation circle, press firmly to activate. You will hear a distinct “snap.”



5. Read the result at **10 minutes**.



Abnormal

Sample spot is the same color or darker than reference spot.



Normal

Sample spot is lighter than reference spot.

For more information or to order this test, visit idexx.co.uk/snapcpl.

*Before beginning any test, refer to the package insert for complete instructions.

SNAP[®] fPL Test

Test cats that present with lethargy, decreased appetite, dehydration, weight loss, vomiting, and/or diarrhoea.



Test procedure*



1. Using the provided pipette, dispense **3 drops of sample** and **4 drops of conjugate** to the sample tube.



2. Gently **invert 3–5 times** to mix.



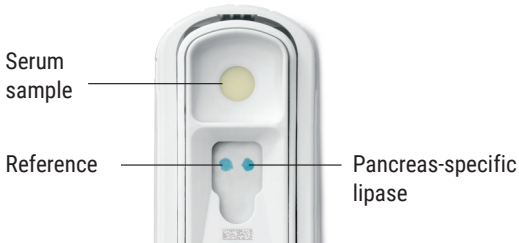
3. Pour the entire contents of the sample tube into the sample well of a SNAP fPL device.



4. Use the SNAP Pro[®] Analyser to automatically activate the SNAP test and interpret the result.
OR
When colour **first** appears in the activation circle, press firmly to activate. You will hear a distinct “snap.”



5. Read the result at **10 minutes**.



Abnormal

Sample spot is the same color or darker than reference spot.



Normal

Sample spot is lighter than reference spot.

For more information or to order this test, visit idexx.co.uk/snapfpl.

*Before beginning any test, refer to the package insert for complete instructions.

SNAP[®] Parvo Test

Test dogs that present with sudden onset of lethargy, vomiting, fever, and diarrhoea.

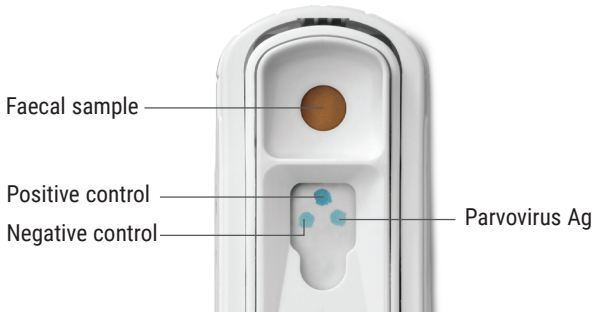


Can be stored at room temperature.*

Test procedure[†]



1. Swab sample[‡] and place swab tip into tube. Bend bulb to break seal and release conjugate.
2. Squeeze and release bulb **3 times** to mix sample and conjugate.
3. Squeeze bulb to dispense **5 drops** into the sample well of a SNAP Parvo device.
4. Use the SNAP Pro[®] Analyser to automatically activate the SNAP test and interpret the result.
OR
When colour **first** appears in the activation circle, press firmly to activate. You will hear a distinct “snap.”
5. Read the result at **8 minutes**.



For more information or to order this test, visit [idexx.co.uk/parvo](https://www.idexx.co.uk/parvo).

*Refer to package insert for complete storage requirements.

[†]Before beginning any test, refer to the package insert for complete instructions.

[‡]The collection swab is not intended to be used rectally.

SNAP* Giardia Test

Test dogs and cats that present with diarrhoea.



Test procedure*



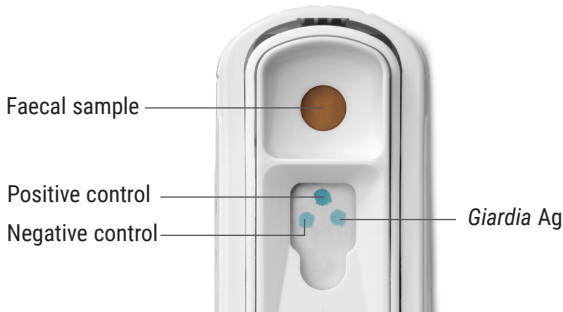
1. Swab sample† and place swab tip into tube. Bend bulb to break seal and release conjugate.

2. Squeeze and release bulb **3 times** to mix sample and conjugate.

3. Squeeze bulb to dispense **5 drops** into the sample well of a SNAP *Giardia* device.

4. Use the SNAP Pro[†] Analyser to automatically activate the SNAP test and interpret the result.
OR
When colour **first** appears in the activation circle, press firmly to activate. You will hear a distinct “snap.”

5. Read the result at **8 minutes**.



For more information or to order this test, visit idexx.co.uk/giardia.

*Before beginning any test, refer to the package insert for complete instructions.
†The collection swab is not intended to be used rectally.

SNAP[®] Feline proBNP Test

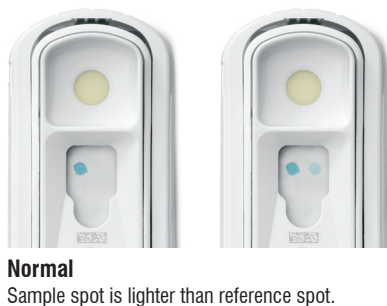
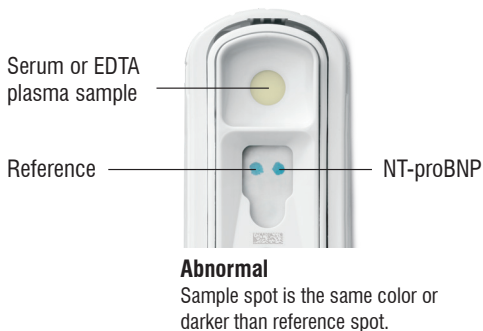
Test cats at risk for cardiac disease (murmur, arrhythmia, respiratory signs, prior to anaesthesia, breed, history, age).



Test procedure*



1. Using the provided pipette, dispense **3 drops of sample** and **5 drops of green conjugate** to the sample tube.
2. Gently **invert 3–5 times** to mix.
3. Pour the entire contents of the sample tube into the sample well of a SNAP Feline proBNP device.
4. Use the SNAP Pro[®] Analyser to automatically activate the SNAP test and interpret the result.
OR
When colour **first** appears in the activation circle, press firmly to activate. You will hear a distinct “snap.”
5. Read the result at **10 minutes**.



For more information or to order this test, visit idexx.co.uk/snapprobnp.

*Before beginning any test, refer to the package insert for complete instructions.

SNAP[®] Lepto Test

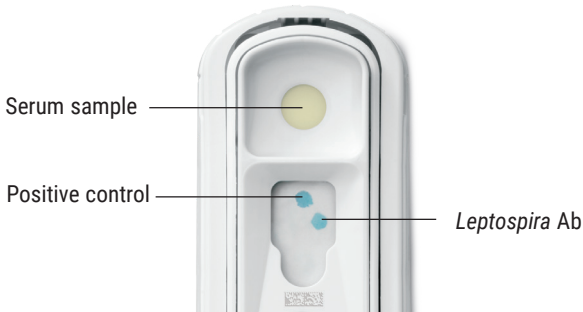
Test dogs when leptospirosis is suspected.



Test procedure*



1. Using the provided pipette, dispense **3 drops of sample** and **4 drops of conjugate** to the sample tube.
2. Gently **invert 3–5 times** to mix.
3. Pour the entire contents of the sample tube into the sample well of a SNAP Lepto device.
4. Use the SNAP Pro[®] Analyser to automatically activate the SNAP test and interpret the result.
OR
When colour **first** appears in the activation circle, press firmly to activate. You will hear a distinct “snap.”
5. Read the result at **10 minutes**.



For more information or to order this test, visit [idexx.co.uk/snapplepto](https://www.idexx.co.uk/snapplepto).

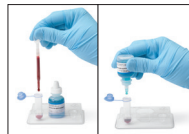
*Before beginning any test, refer to the package insert for complete instructions.

SNAP[®] FeLV Antigen Test

Test cats for feline leukaemia virus (FeLV).



Test procedure*



1. Using the provided pipette, dispense **3 drops of sample** and **4 drops of conjugate** to the sample tube.



2. Gently **invert 3–5 times** to mix.



3. Pour the entire contents of the sample tube into the sample well of a SNAP FeLV Antigen device.



4. Use the SNAP Pro[®] Analyser to automatically activate the SNAP test and interpret the result.
OR
When colour **first** appears in the activation circle, press firmly to activate. You will hear a distinct “snap.”

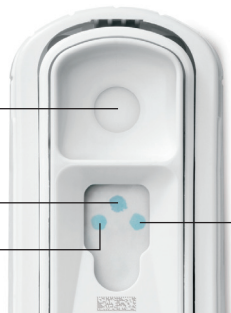


5. Read the result at **10 minutes**.

Whole blood[†], serum,
or plasma sample

Positive control

Negative control



FeLV Ag

For more information or to order this test, visit [idexx.co.uk/snapfelv](https://www.idexx.co.uk/snapfelv).

*Before beginning any test, refer to the package insert for complete instructions.

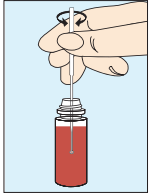
[†]Anticoagulated whole blood (e.g., EDTA, heparin)

SNAP[®] Foal IgG Test

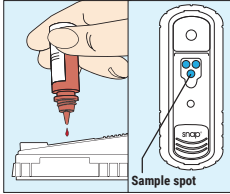
Test foals for immunoglobulin G (IgG) levels.



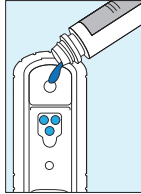
Test procedure*



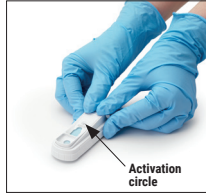
1. Dilute sample.† Mix thoroughly and dispose of the first **5–10 drops** from the bottle.



2. Apply **1 drop** of sample over sample spot.



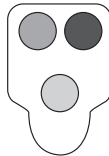
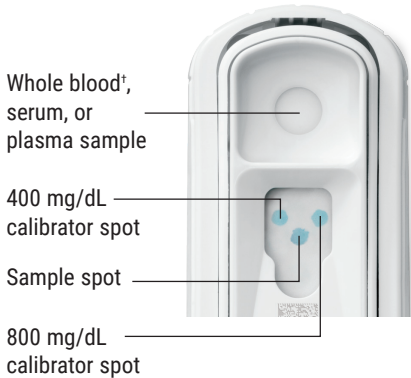
3. Pour the entire bottle of conjugate into the sample well.



4. When colour **first** appears in the activation circle, press firmly to activate. You will hear a distinct “snap.”

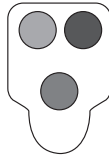


5. Read the result at **7 minutes**.



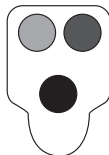
≤400 mg/dL IgG

Colour intensity of sample spot is lighter than or equal to the 400 mg/dL calibrator spot.



400–800 mg/dL IgG

Colour intensity of sample spot is darker than the 400 mg/dL calibrator spot but lighter than or equal to the 800 mg/dL calibrator spot.



>800 mg/dL IgG

Colour intensity of sample spot is darker than the 800 mg/dL spot.

For more information or to order this test, visit idexx.co.uk/foal.

*Before beginning any test, refer to the package insert for complete instructions.
†Anticoagulated whole blood (e.g., EDTA, heparin), serum, or plasma sample.

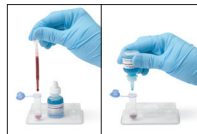
SNAP* *Leishmania* Test

Test dogs when leishmaniosis is suspected.



Can be stored at room temperature for 6 months.*

Test procedure*



1. Using the provided pipette, dispense **3 drops of sample** and **4 drops of conjugate** to the sample tube.



2. Gently **invert 3–5 times** to mix.



3. Pour the entire contents of the sample tube into the sample well of a SNAP *Leishmania* device.



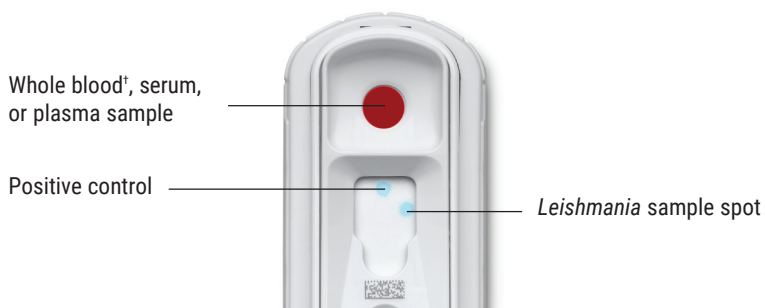
4. Use the SNAP Pro* Analyser to automatically activate the SNAP test and interpret the result.

OR

When colour **first** appears in the activation circle, press firmly to activate. You will hear a distinct “snap.”



5. Read the result at **8 minutes**.



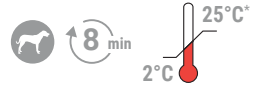
For more information or to order this test, visit idexx.order.uk or www.idexx.co.uk.

*Before beginning any test, refer to the package insert for complete instructions.

†Anticoagulated whole blood (e.g., EDTA, heparin)

SNAP* Leish 4Dx* Test

Screen dogs for six vector-borne disease causing pathogens.



Can be stored at room temperature for 6 months.*

Test procedure*



1. Using the provided pipette, dispense **3 drops of sample** and **4 drops of conjugate** to the sample tube.



2. Gently **invert 3–5 times** to mix.



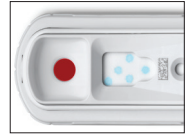
3. Pour the entire contents of the sample tube into the sample well of a SNAP Leish 4Dx device.



4. Use the SNAP Pro* Analyser to automatically activate the SNAP test and interpret the result.

OR

When colour **first** appears in the activation circle, press firmly to activate. You will hear a distinct “snap.”



5. Read the result at **8 minutes**.

Whole blood[‡], serum,
or plasma sample

Positive control

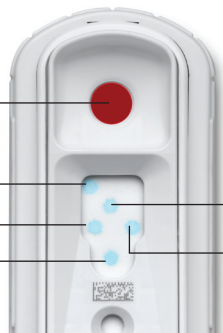
E. canis/*E. ewingii* Ab

L. infantum

A. phagocytophilum/

A. platys Ab

D. immitis Ag



For more information or to order this test, visit [idexx.co.uk/leish-4dx](https://www.idexx.co.uk/leish-4dx).

*Before beginning any test, refer to the package insert for complete instructions.

†Anticoagulated whole blood (e.g., EDTA, heparin)

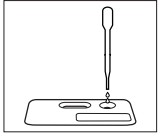
Angio Detect* Test

Detects Angiostrongylus vasorum antigen in dogs.

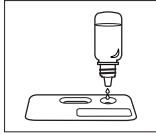


Refrigeration not required.*

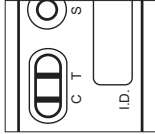
Test procedure*



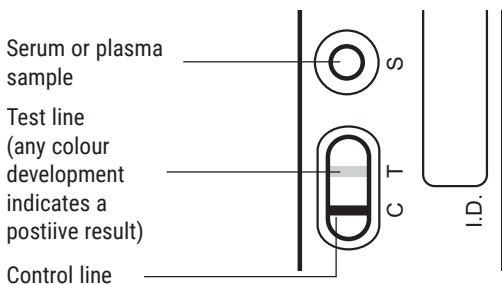
1. Using the provided pipette, dispense **3 drops of sample** into the sample well (S) until it is completely absorbed.



2. Remove the blue cap only from the test buffer bottle, leaving the white cap firmly attached. Then hold the buffer bottle vertical and add **3 drops of buffer** to the circular sample well.



3. Read the result at **15 minutes**.



For more information or to order this test, visit idexx.order.uk or www.idexx.co.uk.

*Before beginning any test, refer to the package insert for complete instructions.

Have questions?

Contact IDEXX Customer and Technical Support
at **0203 7887 508**.



IDEXX